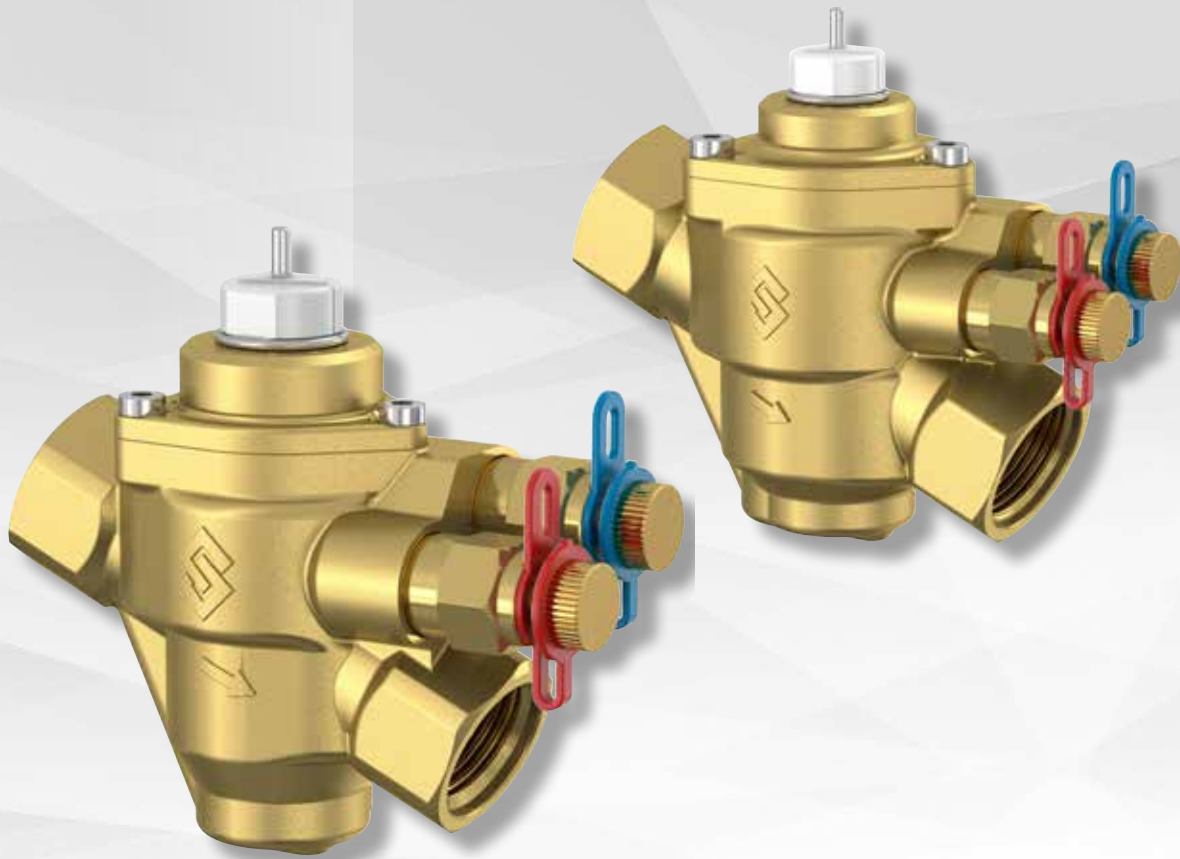


Optimal system efficiency
at all times



NexusValve Vivax G2 EQM
Pressure Independent Control Valve

- Saves more than 8% energy compared to standard control valves
- Slim design, lightweight
- Stable EQM characteristic
- Flow measurement



Saves more than 8% energy compared to standard control valves!

NexusValve Vivax G2 EQM is a combination of a balancing valve and a control valve that maintains a constant flow rate regardless of pressure fluctuations in the heating or cooling systems. Thanks to an accurate balancing, as well as the equal percentage control characteristic, your flow management for the emitter has never been so precise.

The integrated differential pressure regulator ensures a high level of control authority while preventing over-supply in the system at all times. Without an actuator, the NexusValve Vivax G2 EQM is an flow limiter. In this way, the valve guarantees the intended flow rate in the end devices, regardless of the requirements of other consumers or lines in the system, thus saving en-

High valve authority

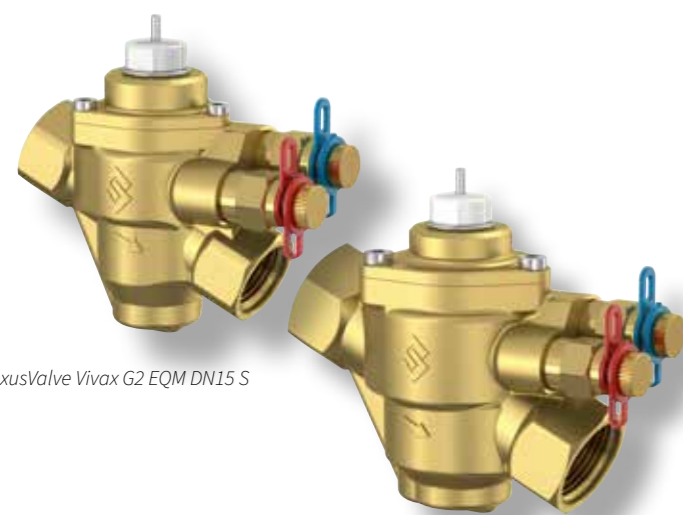
Ideal control for optimal room temperature control. The built-in differential pressure controller provides high control authority whatever the pressure variation of the heating or cooling system.

Long stroke

The NexusValve Vivax G2 EQM is designed to have the best control stroke length in the market for an EQM PICV. The significant stroke of 3 mm at the lowest pre-set up to 6 mm at the maximum pre-set provides most accurate modulating control behaviour over the whole flow range.

Flow measurement

Real field diagnostic
 Differential Pressure: **15 - 400 kPa**
 Heating and Cooling application: **0°C - 90 °C**
 Max Pressure: **PN25**



NexusValve Vivax G2 EQM DN15 S

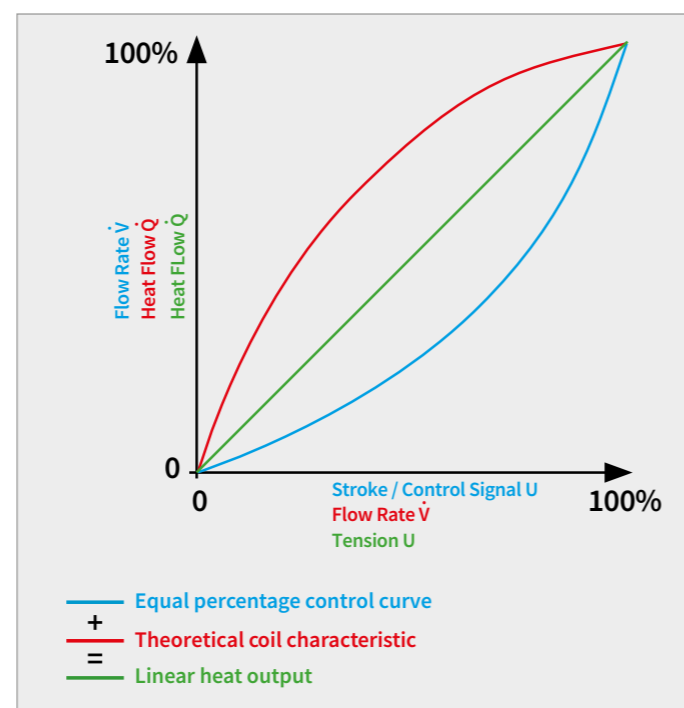
NexusValve Vivax G2 EQM DN20 S

ergy. Measuring connections enable flow measurement thanks to a balancing computer.

The equal-percentage valve characteristic (EQM) and the typical characteristic curve of heating and cooling systems result in a linear overall characteristic curve that enables efficient control of the system.

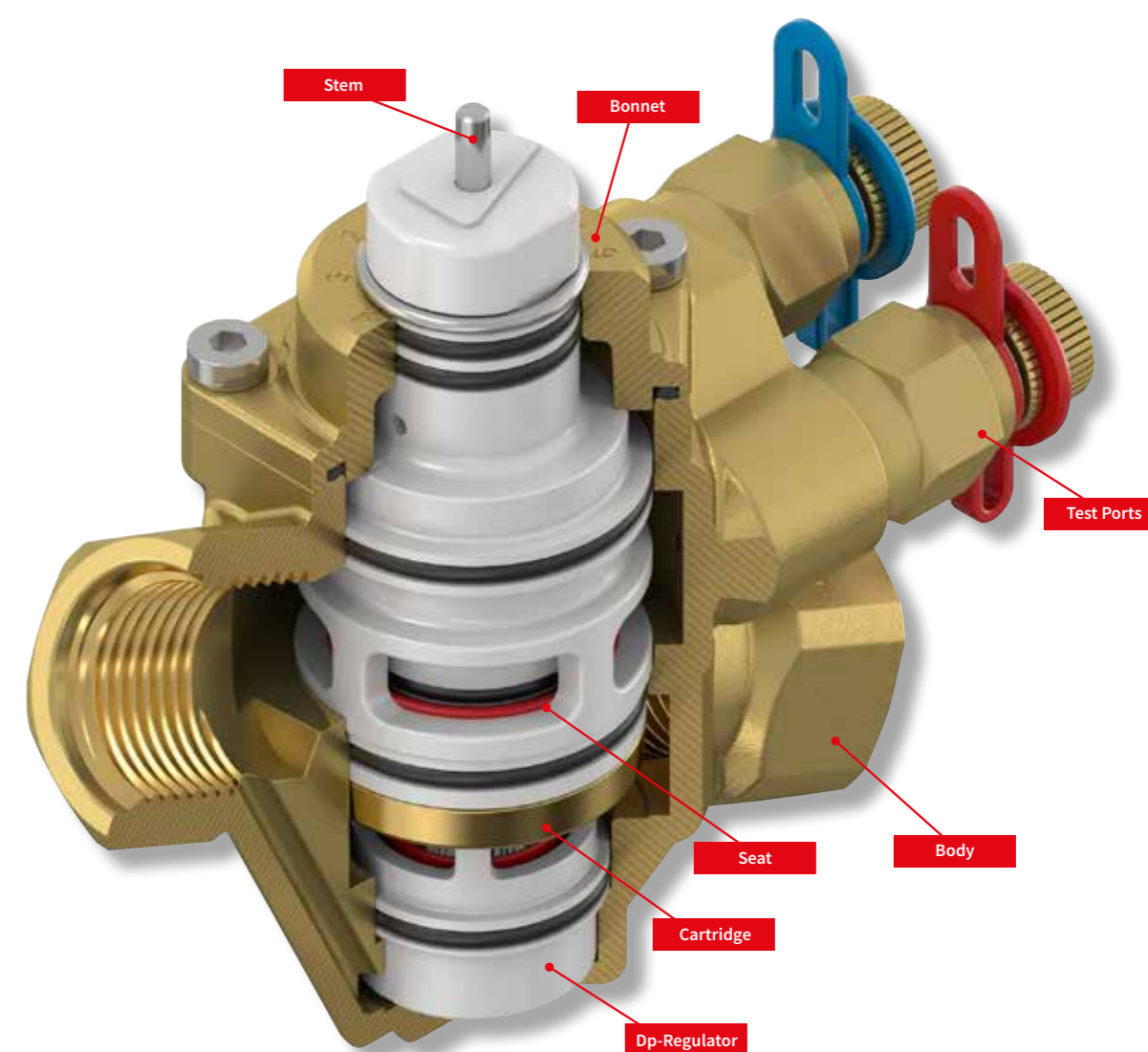
Equal % control valve characteristic (EQM)

The NexusValve Vivax G2 EQM has an equal % control valve characteristic (EQM). This compensates for the unfavorable performance curve of a typical heating system and thus creates an overall linear control characteristic.



Type	DN	Colour	Flow rate	
			l/h	Part No.
Vivax G2 DN 15 L	15	white	68 - 208	MN80597.060
Vivax G2 DN 15 S	15	red	172 - 861	MN80597.061
Vivax G2 DN 20 S	20	white	335 - 1634	MN80597.062

The EQM function is also available for NexusValve Vivax DN25 - DN50 with a specific actuator.



Flow Control to the max

The volume flow is limited by turning the valve cylinder relative to the valve housing. The selected preset is indicated by the arrow on the valve cylinder and the cover. The NexusValve Vivax G2 EQM reduces pressure fluctuations of the system in the lower part, thus keeping the flow constant.

The flow rate is controlled by combining the NexusValve Vivax G2 EQM with an actuator that can be screwed directly onto the valve. The actuator must be able to work by stroke recognition so that its calibration ensure the well-functioning of the valve by managing

the complete valve stroke. The actuator actuates the spindle, thereby partially closing the valve and reducing the flow rate. This is counteracted by the valve spring, which opens the valve again and thus increases the flow rate.

To check the flow, the NexusValve Balancing Computer BC3 is connected to the measuring points of the NexusValve Vivax G2. If at least the smallest differential pressure of the working range is displayed, the required flow rate can be set.

Accessory: NexusValve Balancing Computer BC3

The NexusValve Balancing Computer BC3 is designed for NexusValve Vivax G2 EQM PICV and enables hydraulic balancing of heating and cooling systems. The device is used to measure static pressure, differential pressure and flow in these systems. The flow can be measured in all areas of the hydraulic system and the entire system can be balanced in a simple and efficient way.

- Ergonomic, user-friendly measuring device.
- Fully differential pressure sensor with the 24-bit pressure processing.
- Digital compensation of temperature effects and the pressure sensor nonlinearity.
- User application for mobile devices running the Android operation system (7.0+) / iOS.
- Wireless data transfer.
- Correction of flow calculation based on antifreeze liquid characteristics.
- Easy balancing valve selection from a photographic menu.
- Projects records with the capacity of up to 2000 recordings.





Comap is a Aalberts Group company and is a leading partner in thermal and sanitary solutions, striving for the comfort and environmental performance of buildings. Under the NexusValve brand Comap offers a wide range of static and dynamic balancing valves for collective residential and commercial applications.

NexusValve Vivax G2 EQM
Optimal system efficiency at
all times energy

comap.aalberts-hfc.com/vivax-g2

The Netherlands

Aalberts hydronic flow control
 PO Box 30110
 1303 AC Almere

T +31 (0)36 526 2300
E nl.info@aalberts-hfc.com

United Kingdom

Aalberts hydronic flow control
 Washway Lane
 St Helens, Merseyside
 WA10 6PB

T +44 (0)1744 744 744
E uk.info@aalberts-hfc.com

United Arab Emirates

Aalberts hydronic flow control
 PO Box 341479
 Dubai

T +971 (0)56 682 15 00
E ae.info@aalberts-hfc.com