

## Comap, unique partner of all the actors of the building industry

### Support

Installers, workers, design offices, architects... Comap's technical support team answers all specific questions, in support of the sales teams present throughout the country. This support, from the pre-project stage to installation, contributes to the performance of Comap's global solutions.

### Availability

As a designer and manufacturer, Comap controls all stages of production and ensures the availability of its products in the shortest possible time thanks to its logistics platform located in Chécý.

The Comap ranges are accessible through a solid distribution network.

### Training

As an expert in HVAC and connection solutions, Comap is committed to a sustainable collaborative approach to follow professionals in the realization of their projects.

The sales teams offer training courses for a quick introduction to all Comap solutions.

### Proximity

From order taking to after-sales service, Comap's customer service department meets all your needs and ensures a rapid and complete response, whatever the chosen solution.

## Comap logistics platform

**10 000**  
PRODUCT  
REFERENCES

**50** COUNTRIES

**12 000**  
CLIENTS

**MORE THAN 98%**  
SERVICE

---

## COMAP

A reference partner for thermic and sanitary solutions, serving the comfort and environmental performance of buildings. French experts for almost 100 years in the fields of plumbing and HVAC, our solutions are harmoniously integrated into living spaces.

With nearly 600 employees, we design and manufacture control and connection technologies. They enable intelligent water and energy management and contribute to the comfort and well-being of occupants worldwide.

Comap is a company of the Aalberts Group, which recorded a turnover of €2, 759 billion in 2018.

---

Comap and Flamco are part of **Aalberts hydronic flow control**

16 avenue Paul Santy - BP 8211 / 69355 Lyon Cedex 08 / France

+33 (0)4 78 78 16 00

[www.comap-group.com](http://www.comap-group.com)

[www.aalberts.nl](http://www.aalberts.nl)

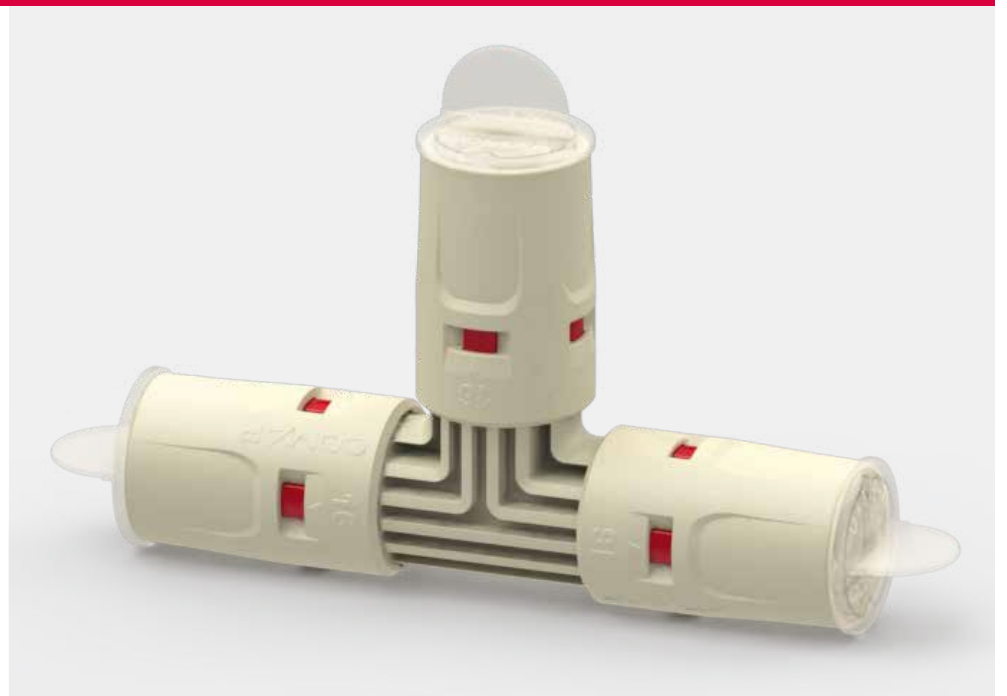
COMAP

MultiSkin



NEW

Push-in fittings



# MultiSkin push-in fitting solutions

For maximum productivity, aesthetics and reliability

The MultiSkin range of push-in fittings is the ideal solution for your domestic hot water and heating systems.

- ▶ More than 40 references
- ▶ Ø 16 to 26 mm



## A multitude of advantages for your construction sites

Comap multi-layer pipes and fittings are suitable for all sanitary and heating installations. This range is designed for both new construction and renovation projects. It can be installed in recessed or exposed spaces.



### Productivity

Time saving : 50% VS solder joint and 20% VS crimping



### Simplicity

Connecting in tight areas : no need for crimping tools



### Safety

Reduced risk of accidents : no hot works,  
No smoke or fume creation, no heavy tools to carry, no noise



### Aesthetics

Blends with flush-mounted and surface-mounted installations,  
white colour, no painting required

but also :

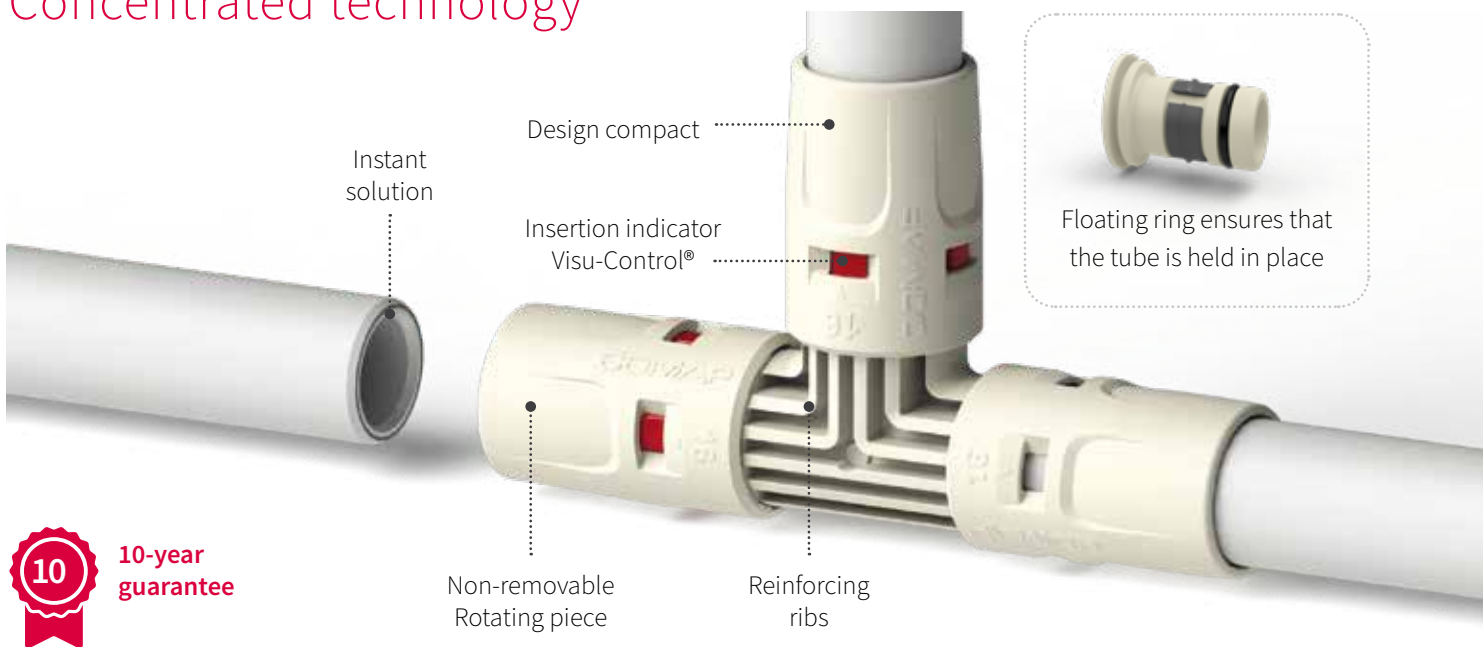
- **Avoiding theft** : non-metallic product
- **Limiting tooling constraints** : less maintenance, management, mobilisation and tooling allocation
- **Working in an occupied environment** : no noise, fast fit

# The technical specifications

Applications	Description	Operating temperature	Operating pressure
Domestic water	Hot and cold potable water installations	+5°C to +95°C	10 bar
Heating and cooling*	For water heating circuits and networks	-10°C to +95°C	10 bar
Rainwater	For rainwater systems in buildings	-10°C to +95°C	10 bar

\* Up to 50% glycol can be used in addition to 50% water

## Concentrated technology



10-year guarantee

### Robust

High-quality components

- PPSU body (hardness 147)
- PPS bonding ring: polymer with very high mechanical strength (hardness 320)



- EN ISO 21003
- NF 545
- KIWA
- KOMO

### Reliable

The **Visu-Control®** is a visual indicator that guarantees a perfect connection.



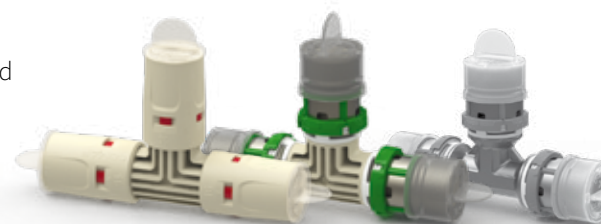
Connection not performed



Connection made

### Performing

- Inverted airfoil to improve Venturi effect
- Less pressure drop  
Higher Kv



# A perfect fit in seconds

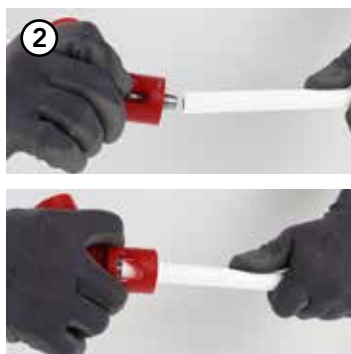
## The 4 key steps for easy installation

### 1 Cut and calibrate the tube

It is important to prepare the tube correctly.



1. Clean and perpendicular cut



2. Calibration with a Comap tool



To assist with the pipe calibration, it is possible to fit the calibration tool to a power drill. Do not exceed a speed of 500 rpm (speed 1 of the power drill).

The connection between the pipe and the fitting is made without tools, and it is essential to calibrate the tube properly (chamfers on the inside and outside of the pipe).

### 2 Remove the plugs

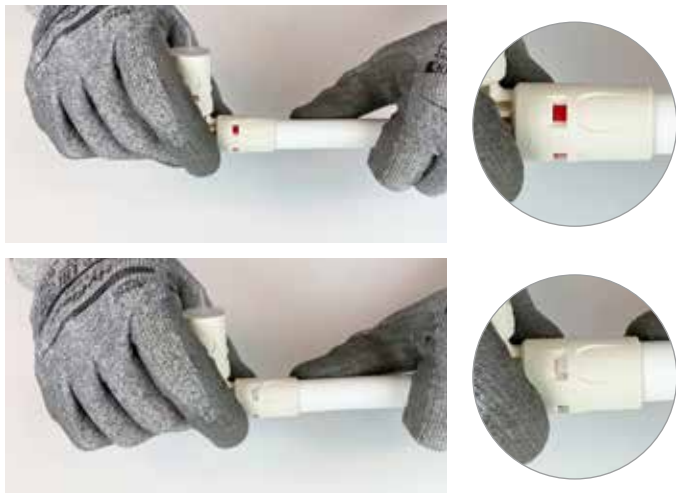


The plug protects the fitting from contamination during transport and handling of the fitting.

**We advise you to remove the plugs only at the last moment in order to protect the fitting as long as possible.**



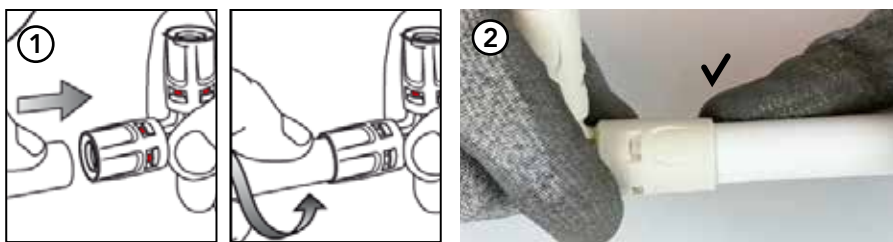
### 3 Insert the tube into the fitting : Visu-control®



System tip: When inserting the tube into the fitting, the red Visu-Control disappears, leaving the white pipe in place. The disappearance of the red Visu-Control indicates that the tube has been correctly inserted and confirms that the connection has been made correctly (a 'click' also indicates that the tube has been correctly inserted). If the red Visu-Control is still visible after insertion, this means that the connection was not made correctly (tube not inserted sufficiently, poor tube preparation, etc.).

Reminder: The MultiSkin Push fitting is not designed to be removable. Once the tube has been inserted into the fitting, it should not be removed.

### 4 Connect the tube



1. Insert the tube into the fitting while turning it slightly and pushing it lengthwise. The pipe must be inserted as far as it will go. The insertion of the unprepared pipe into the push-fit connector may damage the O-ring.
2. Check the correct insertion of the tube using the insertion window (Visu-Control®).

## Comap, complete solutions



Thanks to our wide range of products, we can help you with every aspect of your construction site.

1. Multi-layer pipe - From  $\varnothing$  14 to 75 mm
2. Flamco T-plus
3. Synthetic push-in connector - From  $\varnothing$  14 to 26 mm
4. Metal press fitting - From  $\varnothing$  14 to 75 mm
5. Synthetic press fitting - From  $\varnothing$  16 to 63 mm

Learn more about synthetic push-in fittings

Datasheet :



Installation:

